

2015 ELMORE COUNTY HEALTH DEPARTMENT

Provides caring, quality services that affect every person in Elmore County—not just those who walk through health department doors.



The Bureau of Clinical Laboratories provides quality laboratory results for the following programs: maternity, family planning, child health, STD, tuberculosis control, diabetes, HIV/AIDS, newborn screening and environmental services.



Alabama's Children's Health Insurance Program increases access to care for eligible, uninsured children ages birth through 18, and served 1,967 Elmore County children in the month of August 2015.



WIC provides nutrition assessment, education, and nutritious foods at no cost to a monthly average of 1,356 limited-income pregnant, breastfeeding, and postpartum women, infants, and children up to age 5 at nutritional risk in Elmore County and a monthly average of 139,000 statewide.



Licensed public health social workers provide case management/care coordination for family planning, newborn screening disorders, elevated lead levels, home health, and other services.



Made 292 visits to regulate and permit onsite sewage disposal systems and oversee treatment and disposal of septage and other permitted wastes.



Prevents the occurrence and spread of rabies within the human and animal population of Elmore County by investigating reports of 115 exposures to animal bites.



Provided confidential testing, treatment, counseling, partner referral, and epidemiologic investigations for most sexually transmitted diseases in 590 support nurse visits.



Confidential and professional family planning services were provided in 1,708 visits by Elmore County residents. A wide range of services is available regardless of income to prevent unintended pregnancies through education and contraceptive services.



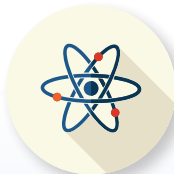
Offers a tobacco Quitline free to Alabama residents. Free call, free coaching, and free nicotine patches (if medically eligible and in coaching) to help tobacco users quit. Call 1-800-QUIT NOW or go to Quitnowalabama.com



Provides breast and cervical cancer screening to uninsured and underinsured women age 40-64. The Elmore County Health Department screened 93 women in 2015.



Newborn screening detects genetic or metabolic conditions, thereby reducing morbidity, premature death, intellectual and other developmental disability through early detection and follow-up.



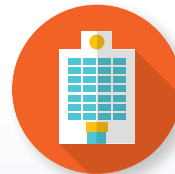
Regulates the possession, use and disposal of radioactive materials and equipment, and administers a radon and naturally occurring radioactive materials program.



Responds to storms, floods, disease outbreaks, nuclear power plant accidents, and other emergencies. Employees provide training, coordination, and response to disasters and partner with local first responders for health, medical, and social services.



Assists rural and medically underserved areas by working with health care providers and organizations to prepare grants and provide workforce development.



Protects patients/residents of health care facilities from abuse and neglect. Works to ensure facilities comply with state and federal standards. Requires corrective action when surveys find facilities are noncompliant. Assures that emergency medical services meet or exceed established standards.

2015 ANNUAL REPORT OF THE ELMORE COUNTY HEALTH DEPARTMENT



Provided 1,796 home care visits that include skilled nursing, physical therapy, medical social work and personal care services through Medicare-certified home health agencies.



Issued 5,429 certified copies of certificates on a while-you-wait basis regardless of where in the state the event occurred.



Conducted 834 inspections of restaurants, schools, and other food service and lodging establishments including child care centers to ensure standards in environmental health are maintained.



Provides health education and other services to modify behavior to prevent and manage chronic diseases and prevent injuries.



Provided 1,150 immunizations including childhood and adult vaccines. Provided Alabama Certificates of Immunization required for school entry.

The Alabama Department of Public Health works closely with your community to protect the public's health through emergency preparedness activities, health care coalitions, training and response.

The mission of the Alabama Department of Public Health is to serve the people of Alabama by assuring conditions in which they can be healthy, and has served Elmore County since 1927. Our purpose is to provide caring, high quality, and professional services for the improvement and protection of the public's health through disease prevention and the assurance of public health services to resident and transient populations of the state regardless of social circumstances or the ability to pay.

All services from the Alabama Department of Public Health are provided to eligible persons without regard to race, color, creed, national origin, political beliefs, handicaps or sex. Payment for services varies. No one will be denied services if unable to pay.

Elmore County Health Department

6501 U.S. Highway 231 • Wetumpka, Alabama 36092 • Office: (334) 567-1171

Home Health (334) 358-2002 or 1-888-749-5694

Bio Monitoring for Chronic Disease Management

People using Medicaid as their sole source of health insurance and with one of the following conditions are eligible for Bio Monitoring Case Management: diabetes, hypertension, or congestive heart failure. Those wishing to participate in the program at no cost to you, or seeking information about this program, should contact Margaret Ezell at (334) 358-2354 or 1-888-749-5694.

Clinic operating hours: 7:30 a.m.-5:00 p.m., Monday through Friday