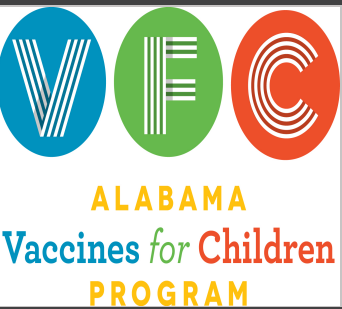
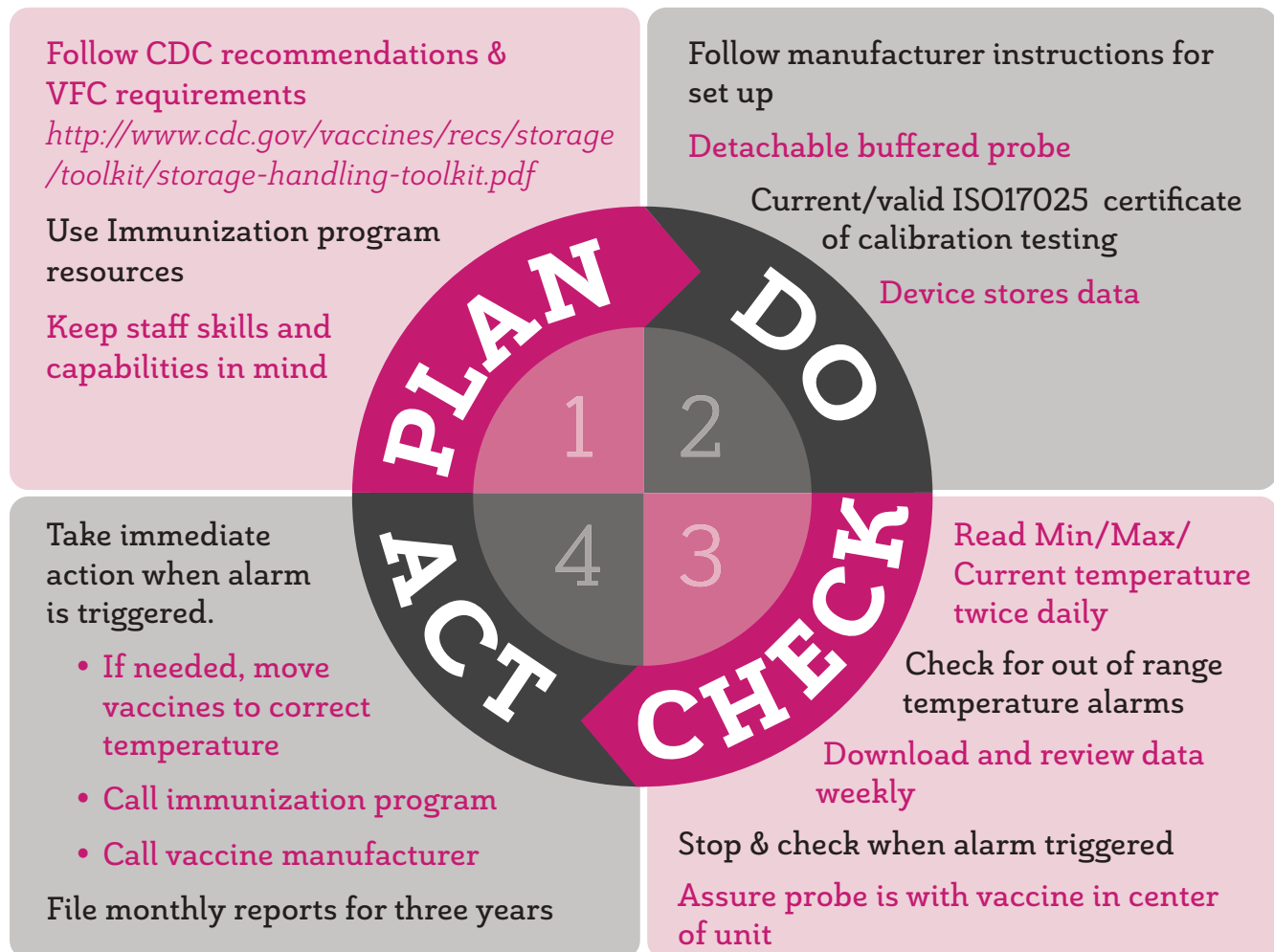


A STEP-BY-STEP GUIDE TO SELECTING AND USING A DATA LOGGER FOR VACCINE INVENTORY

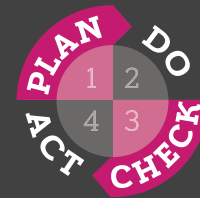


For more information
go to:
immunizationmanagers.org/VSH

Educational resource
created with support from
Berlinger USA



USING A DATA LOGGER – THE DETAILS



PLAN
1

- Detachable temperature probe in buffered material (e.g. bio-safe glycol)
- Check for availability of training tools to support providers and staff before purchasing
- ISO 17025 calibration certificate
- Continuous temperature recording: Minimum every 15 minutes
- Memory: Minimum 4,000 readings or 39 days
- Operating range: -25°C to +55°C (-13°F to +133°F)
- Uncertainty/Accuracy: $\pm 0.5^{\circ}\text{C}$
- Resolution: 0.1°C (or 1 decimal point)
- Battery life: Minimum 6 months
- Track when temperatures are checked: Minimum 2x/day
- LCD display with: current, Min and Max temperatures visible – PLUS alarm status OK or Not OK
- Report: Shows alarms, temperature ranges and duration of excursions
- Assess custom software to avoid installation issues – especially with hospitals and clinics
- Data export capability: Excel, CSV, Txt

DO
2

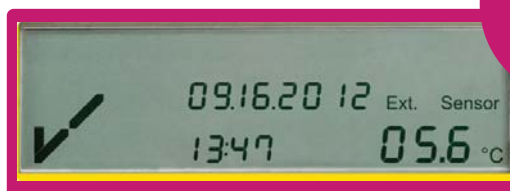
- Place probe in the middle of the unit with vaccines.
- Thread probe wire through door hinge and tape in place (inside & outside the unit).
- First week: reveals storage equipment temperature issues right away
- Know where to find the ISO certificate – Check for an expiry date on the data logger
- Both audible and visual alarms are preferred

CHECK
3

- Read and record temperatures 2x daily noting data/time/temp/initials
 - Note: Initials may be in a separate log book
 - Some data loggers offer this feature
- Download and review reports weekly
 - PDF reports simplify record keeping

ACT
4

- Take immediate action: when there is an alarm
 - Move vaccines to a storage unit operating at the correct temperatures
 - Print report and look for clues to the problem
 - E.g. Is the ave. temperature 5.0°C (41°F)?
 - If not it is too cold or too warm in the unit
 - Send alarm information to immunization program and vaccine manufacturer
 - Alarm reports require the duration of the alarm period and the highest or lowest temp. during the alarm
- Store monthly reports per state/VFC requirements



Display screen



Thread flat wire through gasket on hinged side of unit



Stabilize vial with probe on shelf

Duct tape wire to wall

For more information go to:
immunizationmanagers.org/VSH

Educational resource created with support from Berlinger USA

Data logger manufacturers and distributors:

Accsense http://www.accsense.com/p_p_a102.html

Berlinger <http://www.berlinger.com/en/temperature-monitoring/productshardware/data-loggers/>

Control Solutions Inc. www.vfcdataloggers.com

Dickson <http://www.dicksondata.com/products/find/data-logger>

DeltaTrak <http://www.deltatrak.com/flashkink-vaccine-usb-pdf#specifications>

Lascar Electronics <http://www.lascarelectronics.com/data-logger/>

Onset (Hobo) <http://www.onsetcomp.com/>

SensoScientific <http://www.sensoscientific.com/vaccine-vfc/>

T&D Corporation <http://www.tandd.com/#fragment-1>

Temperature Guard <http://temperatureguard.com/>

Temperature@lert <http://www.temperaturealert.com/Temperature-Alarm.aspx>

Tip Temperature Products www.tiptemp.com

In order to be assured your data logger meets all desired specifications, you may want to discuss them with your vendor. Below is a list of questions to ask your vendor to help you understand all the functions of a data logger. You may use the chart on the next page to fill-in information and compare models.

Questions to ask about desired specifications:

- Does this data logger display the current, minimum, and maximum temperature? Is the display outside of the vaccine storage unit (refrigerator or freezer) where it can be easily accessed?
- Does the unit have an alarm that will alert the user if temperature exceeds the high/low thresholds?
- Does the unit have a reset button that clears the minimum and maximum temperatures since the last clearing?
- Does the unit have a low battery indicator?
- Does the unit have one or more detachable temperature probe(s) in glycol or suitable temperature buffer?
- Does the temperature probe and unit measure accurately, within +/- 0.5°C (+/-1°F and come with a Certificate of Traceability and Calibration?

- Can it record at least a month worth of readings at a 10 minute sample rate?
- Does this unit loop data (record over the oldest data) when memory is full?
- Is the logging interval customizable? At what intervals can this device record?

Questions to ask about additional features:

- Can this unit connect more than one probe?
- Can this unit transmit data wirelessly?
- Is a power cord available?
 - o If not, does the battery last at least 1 year?
 - o How long does the battery last?
 - o Is the battery replaceable?
- Is software included or available for separate purchase? (If separate, considering purchasing to access your stored data).
- What are the system requirements for the software?
- Can this unit place phone calls (landline and mobile), send text messages, and/or send e-mail messages to several numbers and addresses if it detects a temperature excursion?
 - o If so, can a user query the monitor for additional readings while traveling to the office? (If it “recovers” as in a power outage, you want to be able to return home).