

## Infant Mortality

Satellite Conference and Live Webcast  
 Wednesday, October 21, 2009  
 2:00 - 3:00 p.m. (Central Time)

Produced by the Alabama Department of Public Health  
 Video Communications and Distance Learning Division

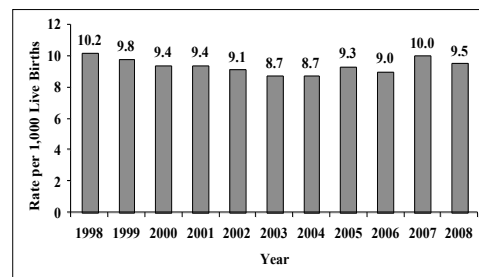
## Faculty

Janice Smiley, MSN, RN  
 Director  
 State Perinatal Program  
 Bureau of Family Health Services  
 Alabama Department of Public Health

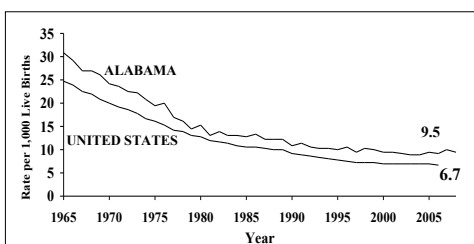
## Infant Mortality Rate (IMR)

- Rate is the number of babies born alive that die prior to their 1st birthday  
 – Expressed as number of deaths per 1,000 live births

## Infant Mortality Rates Alabama, 1998-2008

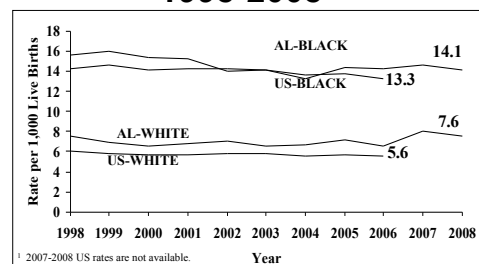


## Infant Mortality Rates Alabama & U.S.<sup>1</sup> 1965-2008



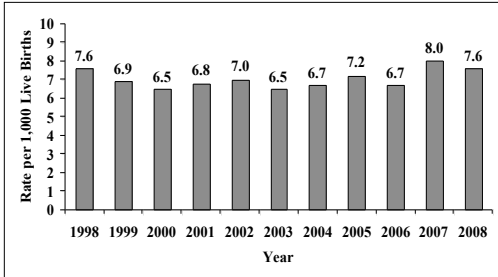
<sup>1</sup> 2007 US rate is provisional.

## Infant Mortality Rates Alabama & U.S.<sup>1</sup> by Race, 1998-2008

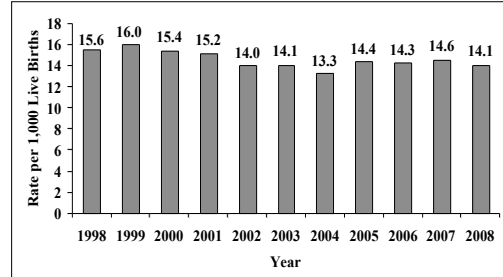


<sup>1</sup> 2007-2008 US rates are not available.

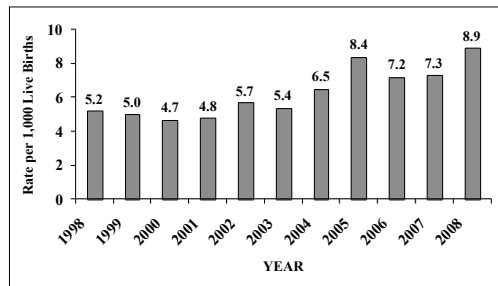
### Infant Mortality Rates, White Infants Alabama, 1998-2008



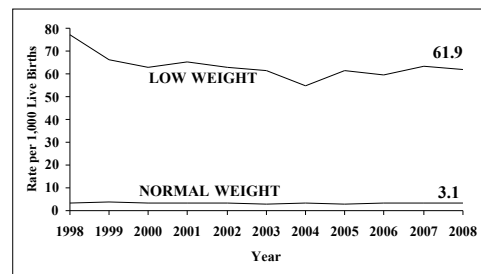
### Infant Mortality Rates, Black Infants Alabama, 1998-2008



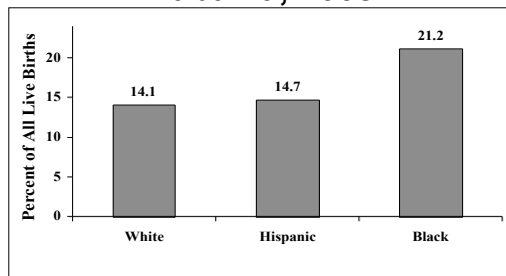
### Infant Mortality Rates Hispanic Infants, Alabama, 1998-2008



### Infant Mortality Rates Low vs. Normal Weight Births Alabama, 1998-2008



### Percent of Births Less Than 37 Weeks Gestation by Race, Alabama, 2008



### Impact

- Economic
- Emotional and financial stress to families

## **Promising Strategies**

- **Preconceptional and interconception care**
- **Access to healthcare across the life span**
- **Fetal and Infant Mortality Review Program**

